



SOLAR CONTROLLER

ML SERIES

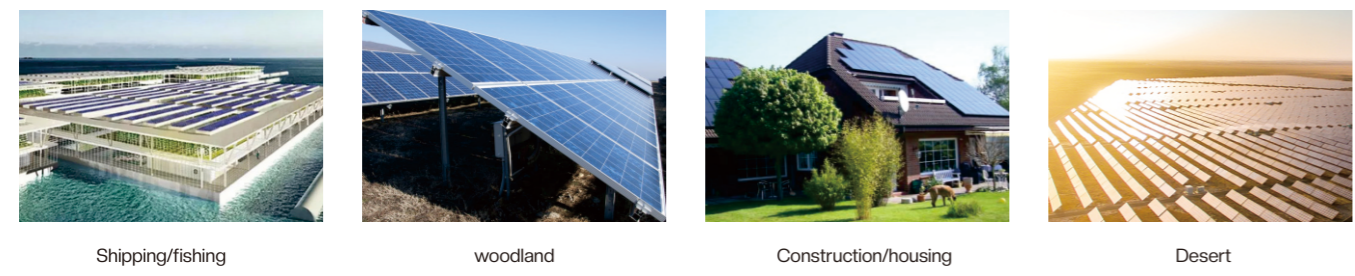
MPPT ML SERIES 40A-100A



FEATURES

- Can support WIFI
- 12/24/36/48V adaptive
- Three-stage smart charging
- Adjustable parameters by pressing buttons
- It can connect Lead acid battery/lithium battery /waterbattery

APPLICATION



ML SERIES

PARAMETERS

Model	ML40415	ML60415	ML80415	ML100415	ML40425	ML60425	ML80425	ML100425	
System Voltage	12/24/36/48VDC(Adaptive)				96VDC				
Rated current	40A	60A	80A	100A	40A	60A	80A	100A	
Charging mode	MPPT maximum power point tracking								
Applicable battery type	Sealed Lead Acid Battery, Gel Lead Acid Battery, Open Lead Acid Battery (can Also Customize Parameters For Other Types Of Battery Charging)								
Charging method	Three Stages: Constant Current, Constant Voltage, Floating Charge								
PV input maximum open circuit voltage (VOC)	DC150V				DC250V				
Starting time	≤10s								
Dynamic response recovery time	≤500us								
Static power	≤4W		≤8W		≤4W		≤8W		
MPPT Tracking efficiency	≥99.5%								
Max efficiency	≥98%								
System identified voltage range	10~64V				10~64V				
Maximum power point operating voltage range	12V	18~150V				18~250V			
	24V	36~150V				36~250V			
	36V	48~150V				48~250V			
	48V	64~150V				64~250V			
Rated charging power	12V	540W	800W	1040W	1300W	540W	800W	1040W	1300W
	24V	540W	1080W	2080W	2600W	540W	1080W	2080W	2600W
	36V	1620W	2400W	3120W	3900W	1620W	2400W	3120W	3900W
	48V	2160W	3200W	4160W	5200W	2160W	3200W	4160W	5200W
	96V	/				4160W	6240W	8320W	10400W
Load voltage	Same as Battery Voltage								
Rated load current	40A								
Load control method	Normally ON/OFF mode/time control mode/light control mode								
Load undervoltage protection	10.5V*N (N stands for batteries number) Parameters can be adjustable								
Cooling	Air Cooling								
Display	HD LCD backlight display								
Protections	Input and output over/low-voltage protection, input and output anti-reverse protection, over-temperature protection, load over-current protection								
Temperature compensation coefficient	-3mV/°C~-2V								
Working temperature	-20°C~+50°C								
Storage temperature	-40°C~+70°C								
Noise (dB)	≤50dB								
Humidity	0~90%RH								
Working altitude	0~3000M								
Dimension, L*W*H	219*260*110		275*348*109		219*260*110		275*348*109		
Net Weight (KG)	2.8KG		4.6KG		2.8KG		4.6KG		
specification Suggested wire specification	7AWG/10mm ²	6AWG/16mm ²	4AWG/25mm ²	2AWG/35mm ²	7AWG/10mm ²	6AWG/16mm ²	4AWG/25mm ²	2AWG/35mm ²	